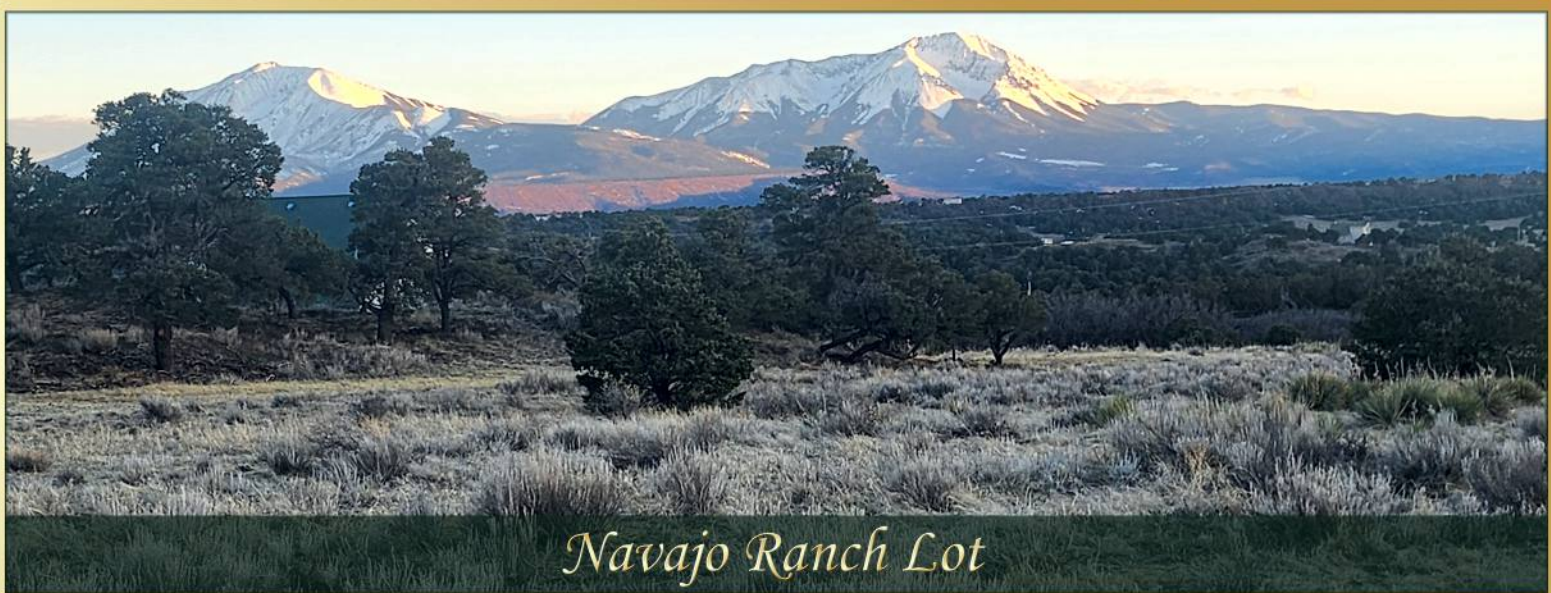


Choctaw Dr. Walsenburg

\$20,000

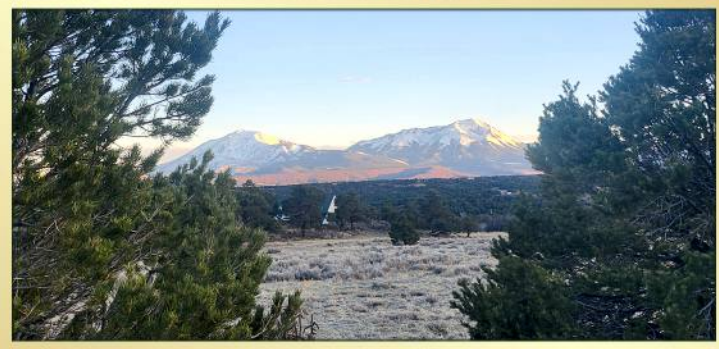
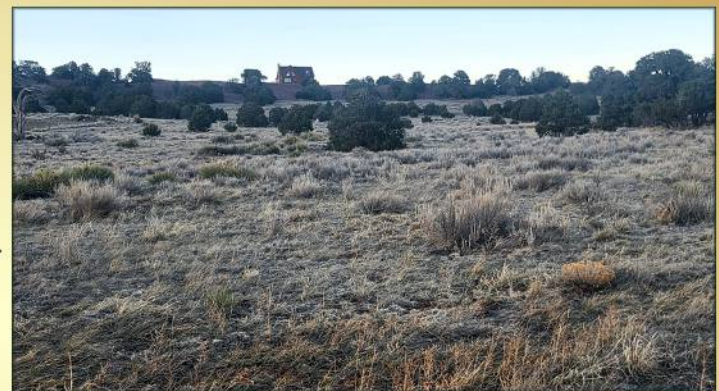
Capture Colorado
Mountain Properties, llc.
CaptureColorado.com



Navajo Ranch Lot

2.16 Acres Lot

Lone Tree Serenity at Navajo Ranches: Picture a solitary cedar tree standing tall against the vast sky - a sentinel that has witnessed generations. This property boasts a majestic lone tree, its branches reaching for the heavens. Beyond the tree, endless vistas including: the Juaotollas (Wa-ha-toyas) or the snow-capped Spanish Peaks, Culebra Peak and the Sangre de Cristos to the South. Mount Mestas, Rough Mountain and Silver Mountain to the West. Two acres of wide open buildable space, flat or gradually rising for a daylight walkout basement! The parcel is nestled in the serene beauty of Navajo Ranch, where convenience meets tranquility. It offers a harmonious blend of seclusion and accessibility.: If you appreciate outdoor activities, you're in luck. The parcel is close to Lathrop State Park and Cuchara Mountain Park, allowing you to enjoy nature and recreational opportunities nearby. Amenities are within minutes including groceries, restaurants, hardware, brand new junior/senior high school, and the highly-esteemed Spanish Peaks Medical Center.



Call Gunny Pagnotta at 719-568-3842
Jacky@CaptureColorado.com

